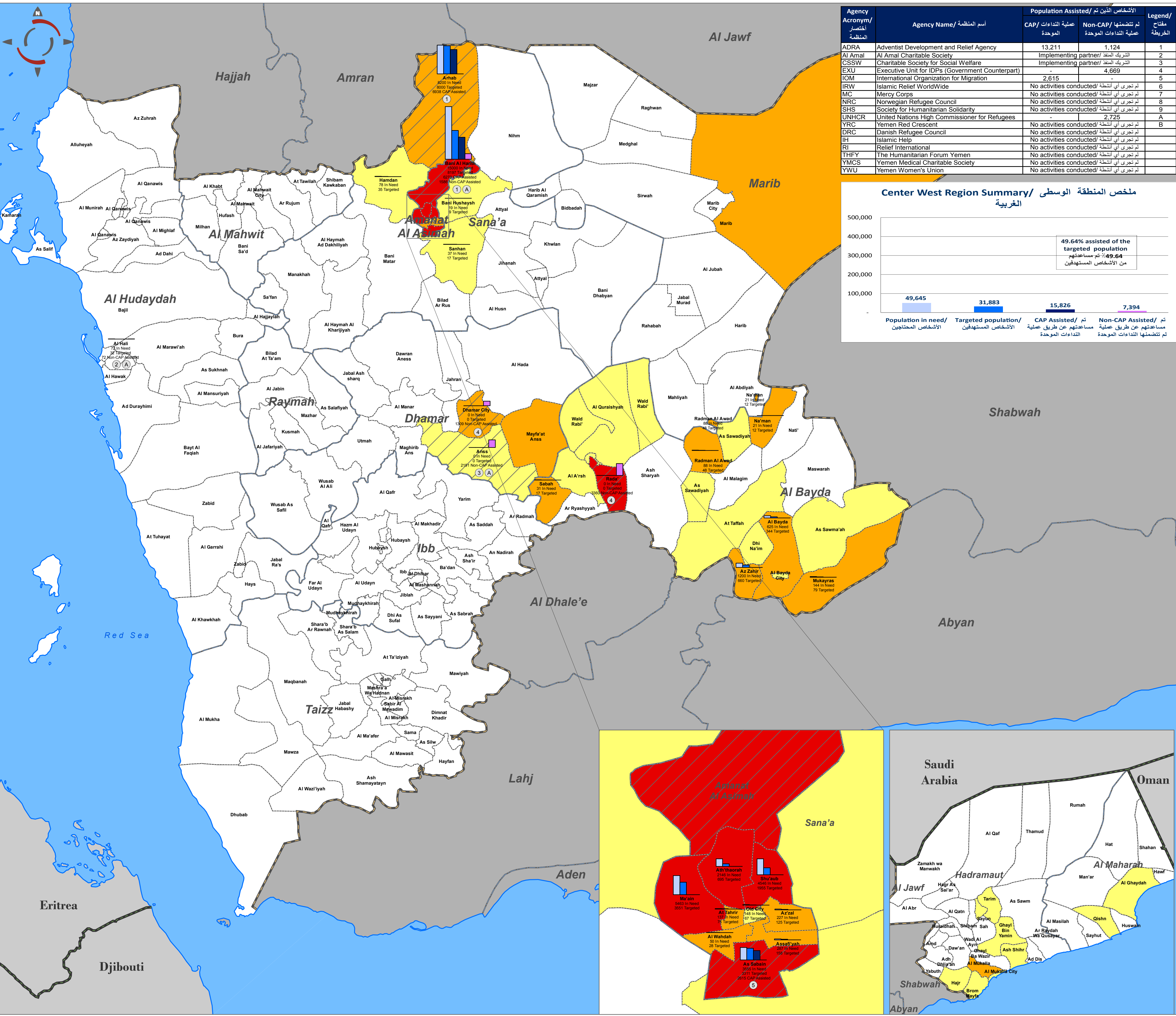







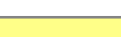
**اليمن - المنطقة الوسطى الغربية - المديرية بحسب الأولوية - الأشخاص المحتاجين، المستهدفين، الذين تم مساعدتهم - كتلة المأوى التنسيق وإدارة المخيمات\المواد الايوائية - 18 أغسطس 2013**

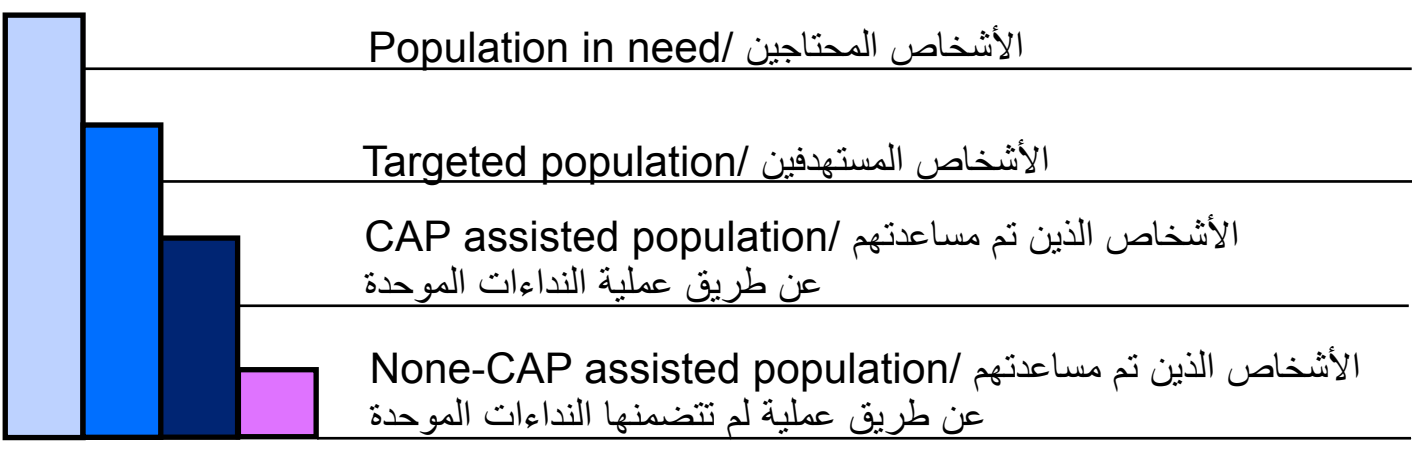


### Legend/ مفتاح الخريطة

- ===== International boundary/ الحدود الدولية
- ===== Region boundary/ حدود المنطقة
- ===== Governorate boundary/ حدود المحافظة
- District boundary/ حدود المديرية
- Coastline/ الشريط الساحلي

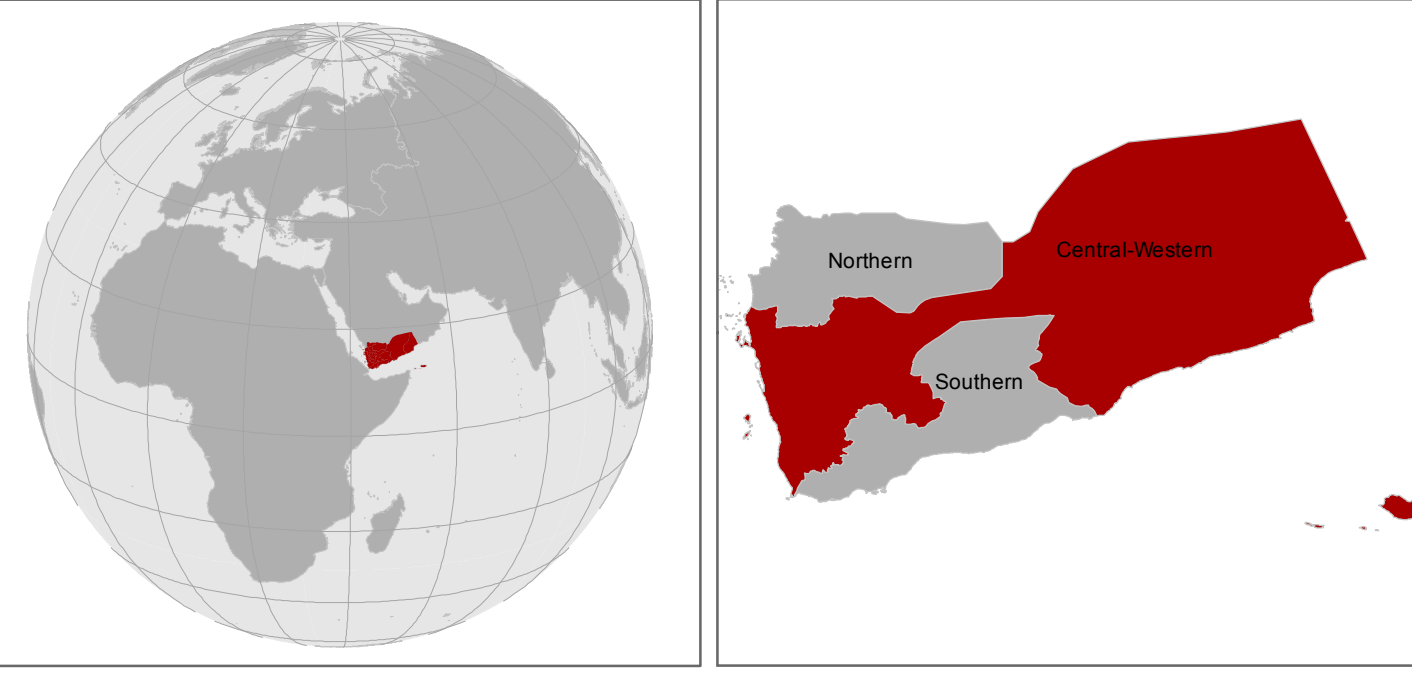
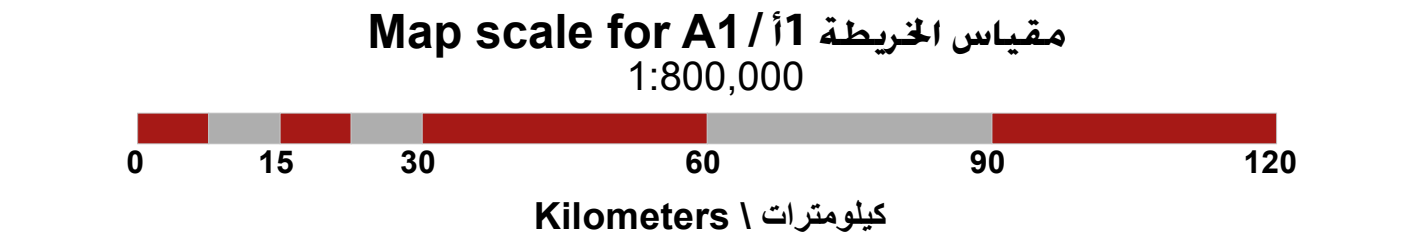
## District prioritization/ المديریات بحسب الأولوية

- |   |  |
|---|--|
|  | No data/ لا توجد بيانات                        |
|  | Relatively normal situation/ الوضع عادي نسبياً |
|  | Poor situation/ الوضع ضعيف                     |
|  | Serious situation/ الوضع خطير                  |
|  | Critical situation/ الوضع حرج                  |
|  | Assistance provided/ المساعدات التي تم تقديمها |



**أهداف:**  
**تحديد الأولويات:** Shelter/CCM/NI Cluster district prioritization have been developed on July 2013 based on the following sources:  
 The cluster assessment reports  
 IDP and returnee population statistics report as of May 31, 2013  
 IDPs displaced within Hajjah statistics report as of May 31, 2013  
 IDPs and IDA disaggregation report by district level  
 The cluster has selected four indicators to assess the cluster's overall performance for each indicator as follows:  
 No. of persons in need for Shelter assistance (i.e. Emergency Shelter, Shelter Grants, and/or long-term/semi-permanent Shelter, Shelter Grants and c). The indicator criteria concerns individuals with shelter needs <300 "Poor" "Serious Situation", 500-2000 "Serious Situation", and >2000 "Critical Situation". If the assessment report stated the presence of needs in the area "Yes" equals "Serious Situation".  
 No. of persons in need for N/A's. The indicator criteria concerns individuals with a need for N/A's <300 "Poor" "Serious Situation", and >2000 "Critical Situation". If the assessment report stated the presence of needs in the area "Yes" equals "Serious Situation".  
 No. of IDPs inside camps/collective centers/outside camps. The indicator criteria concerns IDPs <500 "Poor Situation", 500-2000 "Serious Situation", and >2000 "Critical Situation".  
 No. of IDPs outside the population. The indicator criteria concerns returnee individuals' residence of Returnees equals "Critical Situation".  
 Each district is given a composite score from 0 to 4 based on evidence collected for each indicator and the highest score has been selected from the four indicators to represent the district priority.  
 Districts with no data represent locations where no reliable information and no assessment have conducted.

**Population in need:** CAP 2013  
**Registered population:** CAP 2013  
**Assisted population:** Information collected from January to July 2013 via the IDP/Returnee/CCM Cluster SRP  
**Cartography:** GeoY/CSO



## iMAP August 18/2013

"This map is for planning purposes only and should not be used for navigation. iMMAP can not take responsibility for any damage or injury resulting from the use of this map. Administrative boundaries shown on this map do not imply endorsement by iMMAP or any of its partners."

**www.immap.org**

Contact/ الإتصال بنا على  
yemen@immap.org

**برنامج إدارة المعلومات 18 أغسطس 2013**

هذه الخريطة تستخدم لأغراض التخطيط فقط  
يجب أن لا تستخدم للملاحة. برنامج إدارة المعلومات  
لا يتحمل المسؤولية عن أي أضرار أو إصابات ناجمة عن  
استخدام هذه الخريطة. الحدود الإدارية المبينة على هذه  
الخريطة لا تدل على أية مصادقة عليها من قبل برنامج  
إدارة المعلومات أو أي من شركائها.